

ITRAY

IT'S CABLE TRAY,
REINVENTED



 **legrand**[®]

PW Itray

Straight Sections

PW Itray:

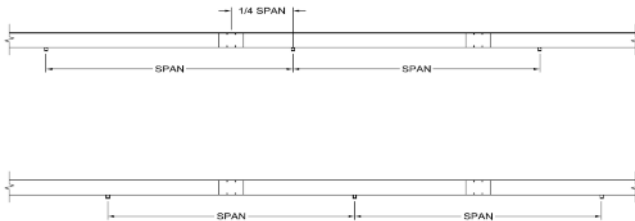
Mid span splice is standard on all aluminum Itray (12B - 24C)

- 4" - 7" alum. Trays, 4 bolts per splice

Competitors:

1. Standard one size 24C. Not available in all other sizes. 10 bolts per splice.
2. Optional on some 6" trays, field drill holes. 8 - 12 bolts per splice

What is the advantage of mid-span splicing?



Advantages of Mid Span Splicing -

- No planning splice locations. (save design time)
- No cutting tray to force splice to land at quarter point. (save installation time)
- Less hardware
- Just install tray - no worries!

PW Itray

Fittings

PW Itray:

- Reduces fitting support standard on all 4" -7" aluminum trays (12B-24C)
- Only 4 bolts per splice/faster installation
- Snap in design speeds installation (frees hands to install hardware)

Competitor:

- NEMA VE2 Support Standard
- Up to 8 bolts per splice
- Splice plates need to be held in place to insert hardware

What is the advantage of reduced fitting supports?

Support costs range from \$450 indoor trapeze to \$7500 each outdoor

| EXAMPLE | NEMA VE2 | PW Itray Reduced Fitting |
|--|------------------|-----------------------------|
| 1000' 6" Alum 20 C tray 5 Tees 10 90's | \$20K | \$20K |
| Supports required: | | |
| Straights (50 pc) | 55 | 50 |
| Tee (5 pc) | (4) 20 | (3) 15 |
| 90's (10 pc) | (2) 30 | (2) 20 |
| Total Supports Needed | 105 | 85 |
| Outdoor Structural Support cost* | \$2000 | \$2000 |
| Total Cost | \$210,000 | \$170,000 |
| \$20K of Itray yeilds \$40K of installation savings | | <u>\$40,000</u> |

*W6x8 15' Long HDG Beam welded into existing pipe bridge

PW Itray

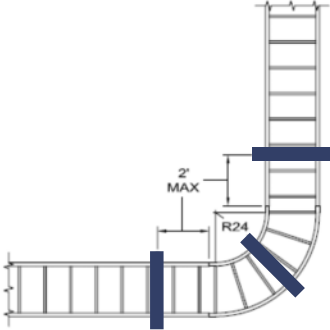
Reduced Fitting Supports

Horizontal Bends:

(36" radius max)

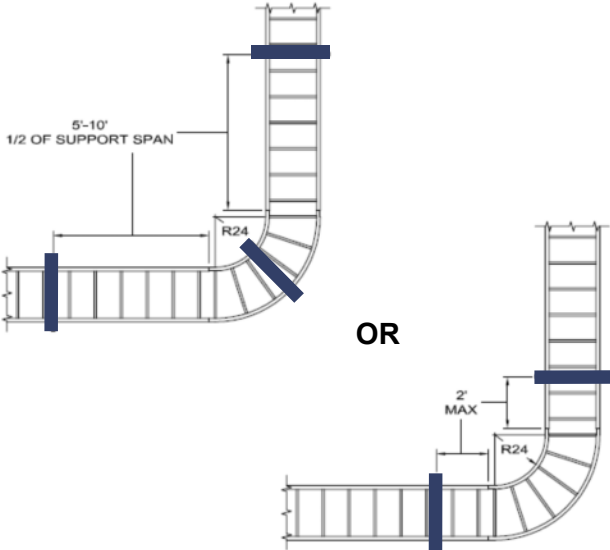
NEMA VE2

- 3 supports required



PW Itray

- 1- 2 supports required



PW Itray

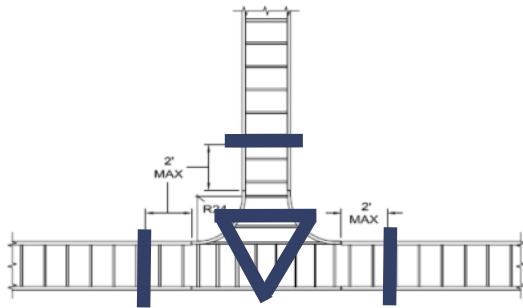
Reduced Fitting Supports

Horizontal Tees:

(36" radius max):

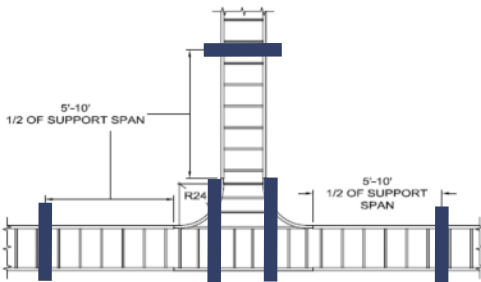
NEMA VE2

- 6 supports required

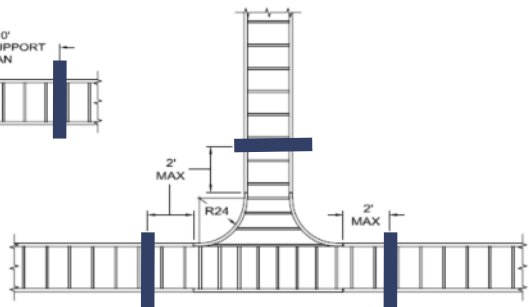


PW Itray

- 3- 5 supports required



OR



PW Itray

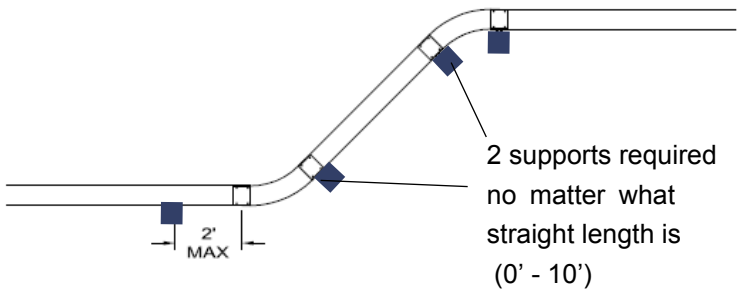
Reduced Fitting Supports

Vertical Bends:

(36" radius max)

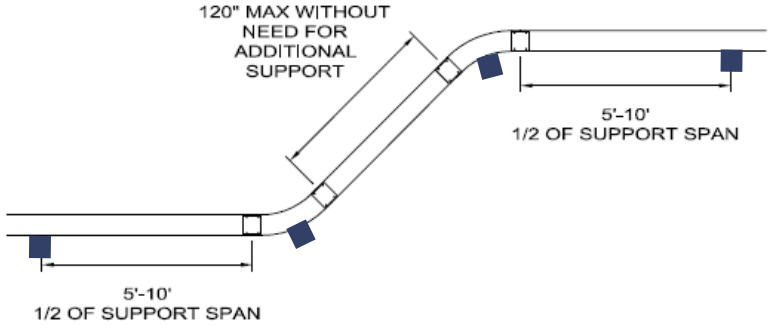
NEMA VE2

- 4 supports required



PW Itray

- 2 supports required



PW Itray

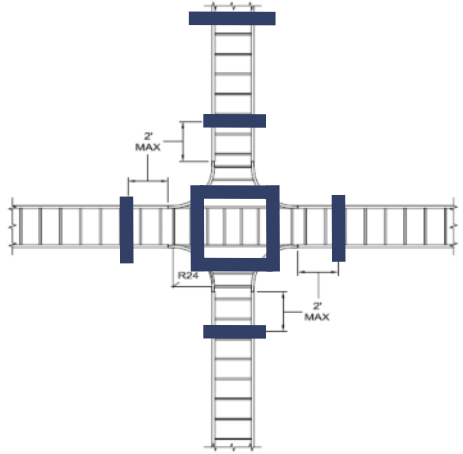
Reduced Fitting Supports

Horizontal Cross:

(36" radius max)

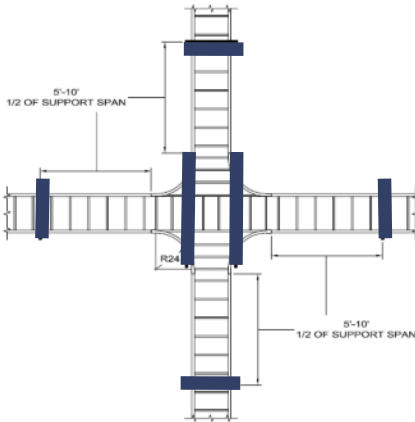
NEMA VE2

- 8 supports required

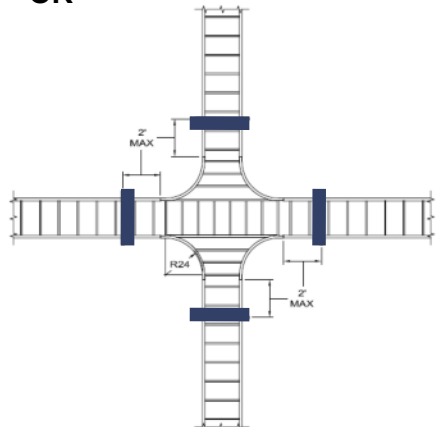


PW Itray

- 4 - 6 supports required



OR





Electrical Wiring Systems

8319 State Route 4
Mascoutah IL 62258
800.658.4641
www.legrand.us/cablofil

570 Applewood Crescent
Vaughan, Ontario L4K 4B4
905.738.9195
www.legrand.ca