

INFINIUM CORE PERFORMANCE LEVEL

Infinium acclAIM Fiber solutions

designed to be better.™



Cut **Cost.** Cut **Complexity.** Cut **Cassettes.**

INFINIUM *acclA/M* FIBER SOLUTION

Infinium *acclA/M* redefines connectivity by replacing pre-terminated cassette-based solutions with direct connections eliminating components, process, and cost. Infinium *acclA/M* delivers the only connectivity on the market with a near lossless link, almost unlimited scalability, and no gender considerations. The direct mating breakout and application defined polarity vastly improves density and flexibility and enables sustainable migration improving system life-cycle tremendously.

Minimize Loss - Maximize Optical Headroom

- Lowest loss pre-term Solution
- Minimize or eliminate need for splicing
- Maximize optical headroom to overcome barriers to performance

Design Smarter - Longer Lifecycle

- Simplicity of design combined with application-defined on-site polarity adjustment, fewer components, and near-lossless performance enables acclA/M to provide a multi-generational lifecycle with a single installation of a sustainable building asset for decades to come

Ultra-High Density Plus (UHD+)

- Make the most of each rack unit (RU) with UHD+ offering up to 192 fibers per RU (33% more than High Density)

Simplify Connectivity

- No gender considerations - no pins, just direct connections
- Direct-Mating Breakout - acclA/M connectors mate directly to an array of 2-fiber MDC duplex patch cords
- Application-Defined Polarity - polarity can be adapted to nearly any link configuration; preplanned, on-site, or on the fly with no options to determine when ordering or designing
- Improved accessibility - with the increased density of each connector and a smaller footprint enabled by acclA/M, there is more room to work on each panel

Reduce Labor - Lower Cost

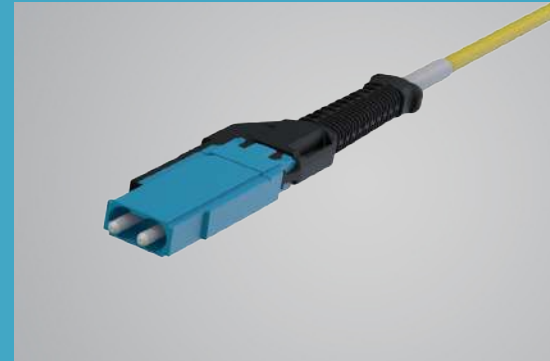
- 40% faster install
- 60% faster removal
- Single link testing after mating
- Faster moves adds & changes

Approaching Infinite Scalability

- Based on the simplified design, unparalleled performance, and architecture flexibility, Infinium acclA/M has an almost limitless migration path

Go Live Faster

- Easy to stock and short lead times for conversion adapters enable rapid or emergency deployment



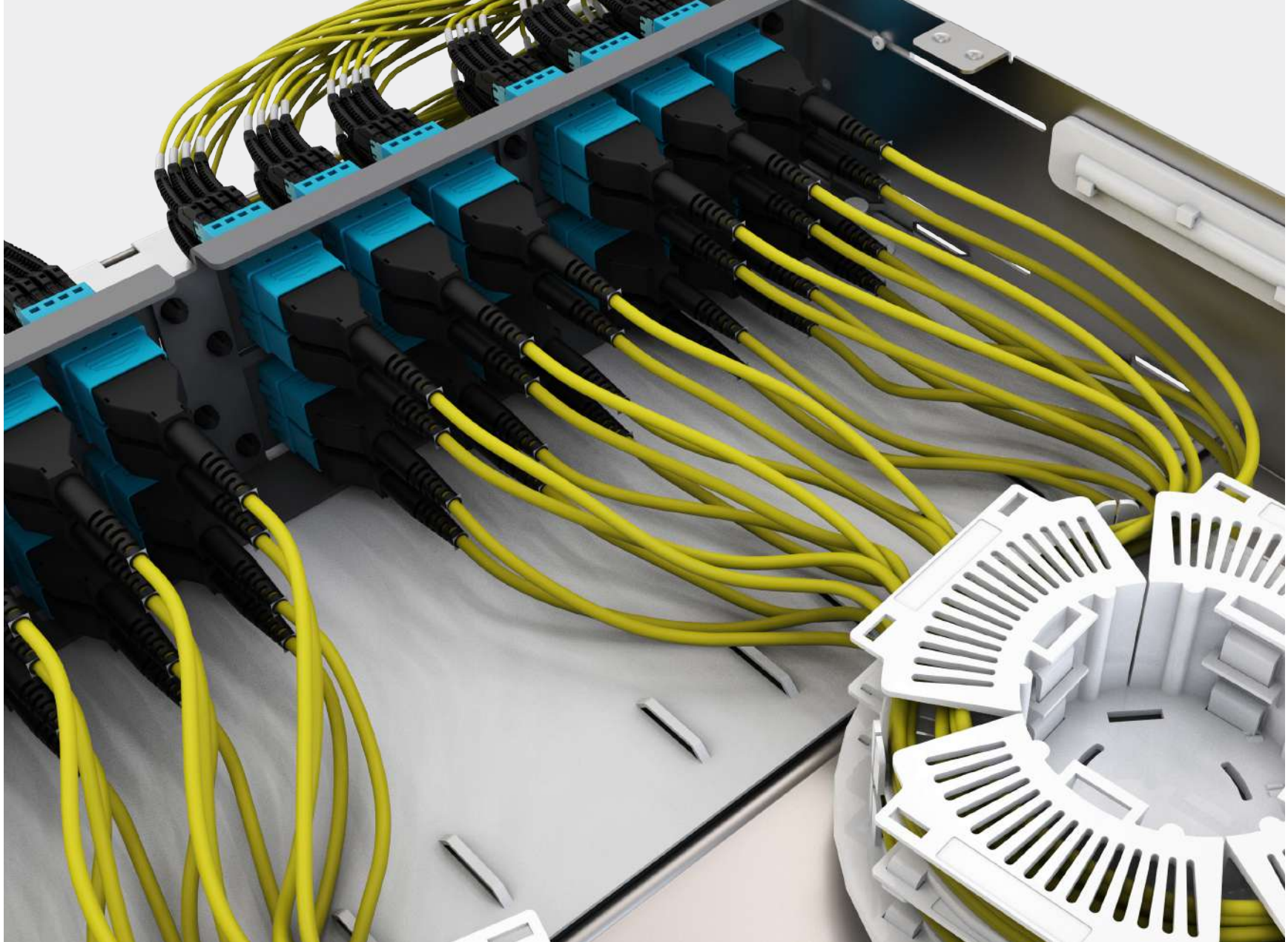
MDC CONNECTOR

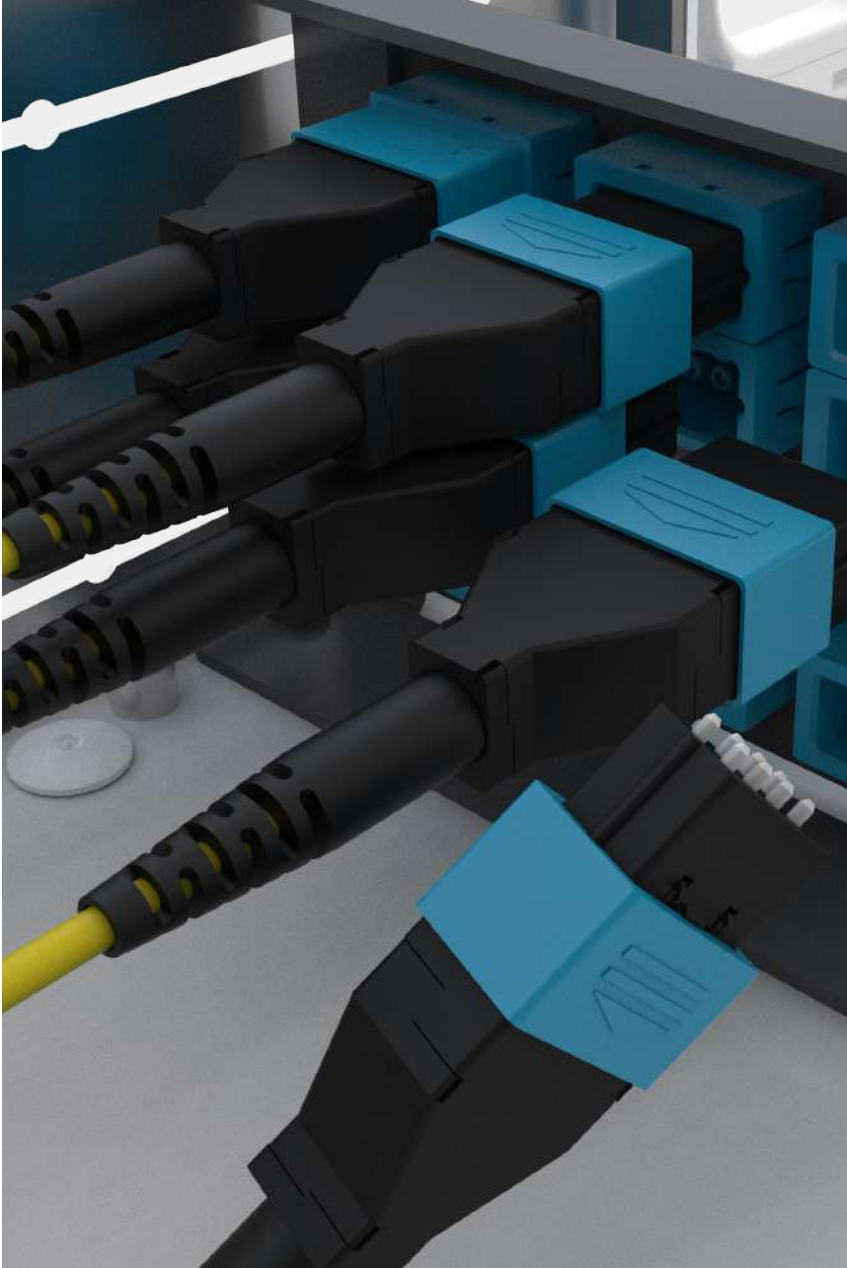


acclA/M CONVERSION ADAPTER

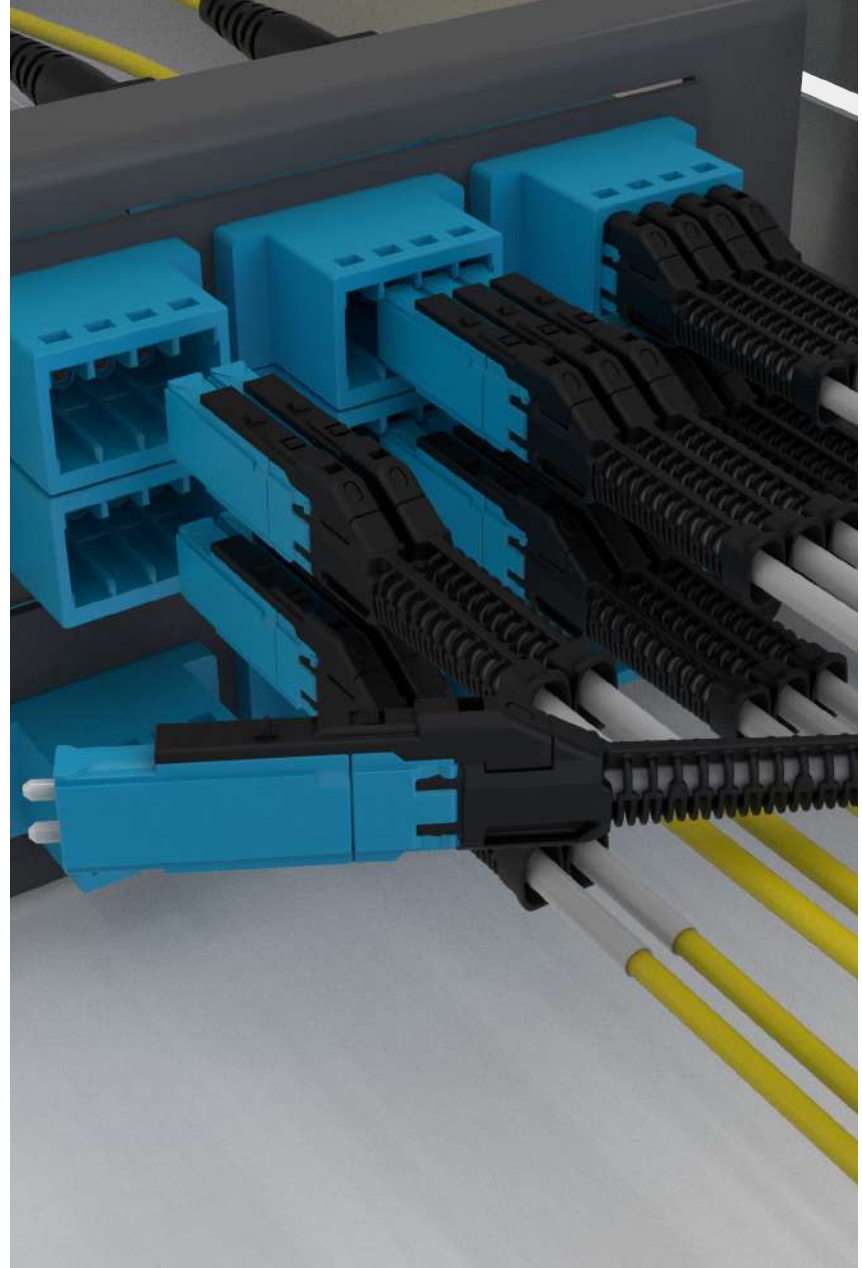


acclA/M CONNECTOR



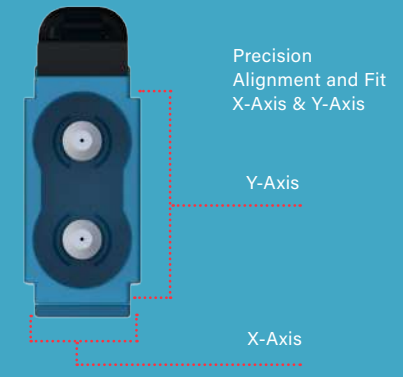
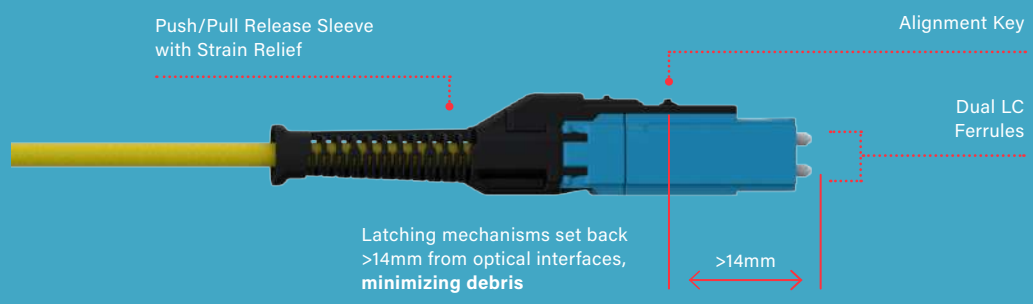
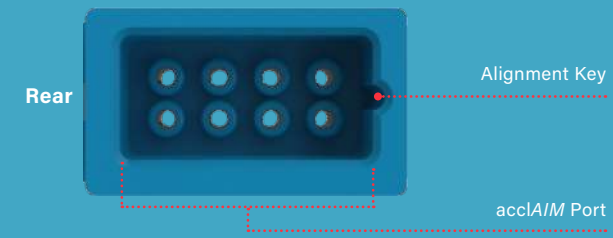
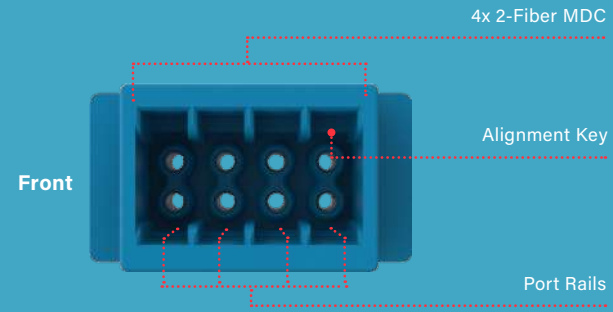
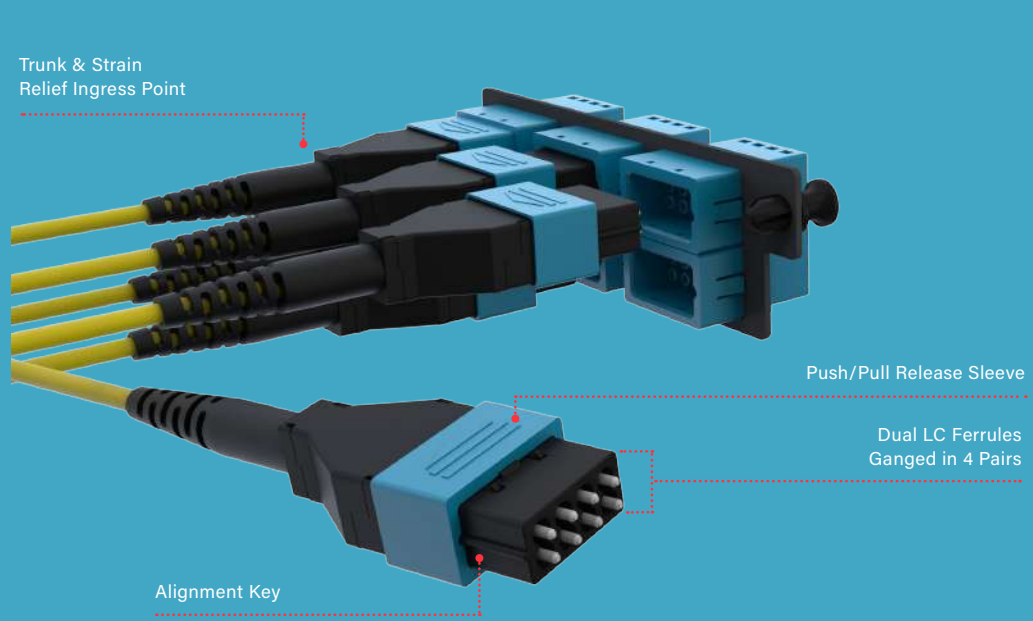


Infinium acclAIM Trunk



Infinium acclAIM Conversion
Adapter Panel and MDC Patch Cord

INFINIUM acclA/M – SOLUTION COMPONENTS



INFINIUM acclA/M – CONNECTOR COMPARISON

Infinium acclA/M utilizes a direct mating breakout – eliminating the need for a cassette to breakout multi-fiber cable.

Current Cassette Based Architecture



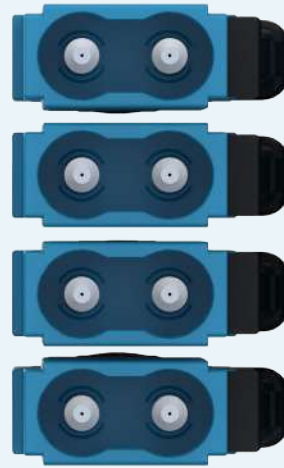
MPO/MTP



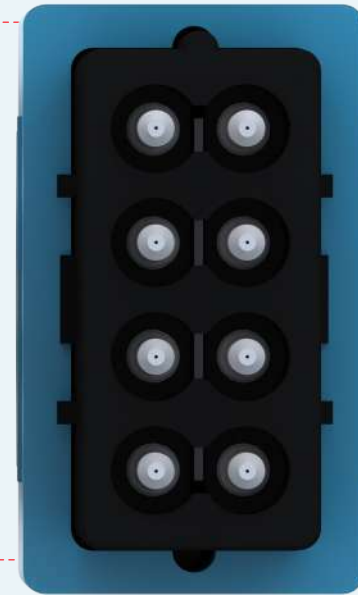
DUPLEX LC

SIZE COMPARISON
DIME MEASUREMENT: **0.705 IN / 17.91 MM**

acclA/M Based Architecture



MDC (X4)



acclA/M



INFINIUM acclAIM – SIMPLIFIED INTERFACE WITH IMPROVED DENSITY

Current Cassette Based Architecture

3x 8F MTP/MPO
2x 12F MTP/MPO
Connectors (24F)

Transition/breakout from high density MTP connectors to individual fiber connectors (commonly required to connect electronics)

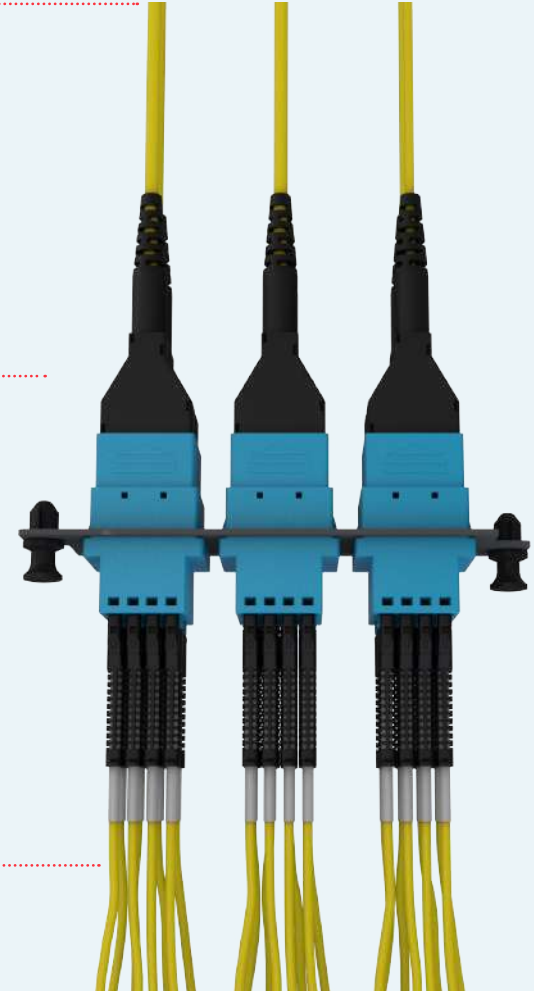


12x Duplex LC
Connectors (24F)

acclAIM Based Architecture

6x Infinium acclAIM Octal
Ferrule Connectors (48F)

Utilizes Direct Mating
ferrule to ferrule.
Simplifying Connectivity

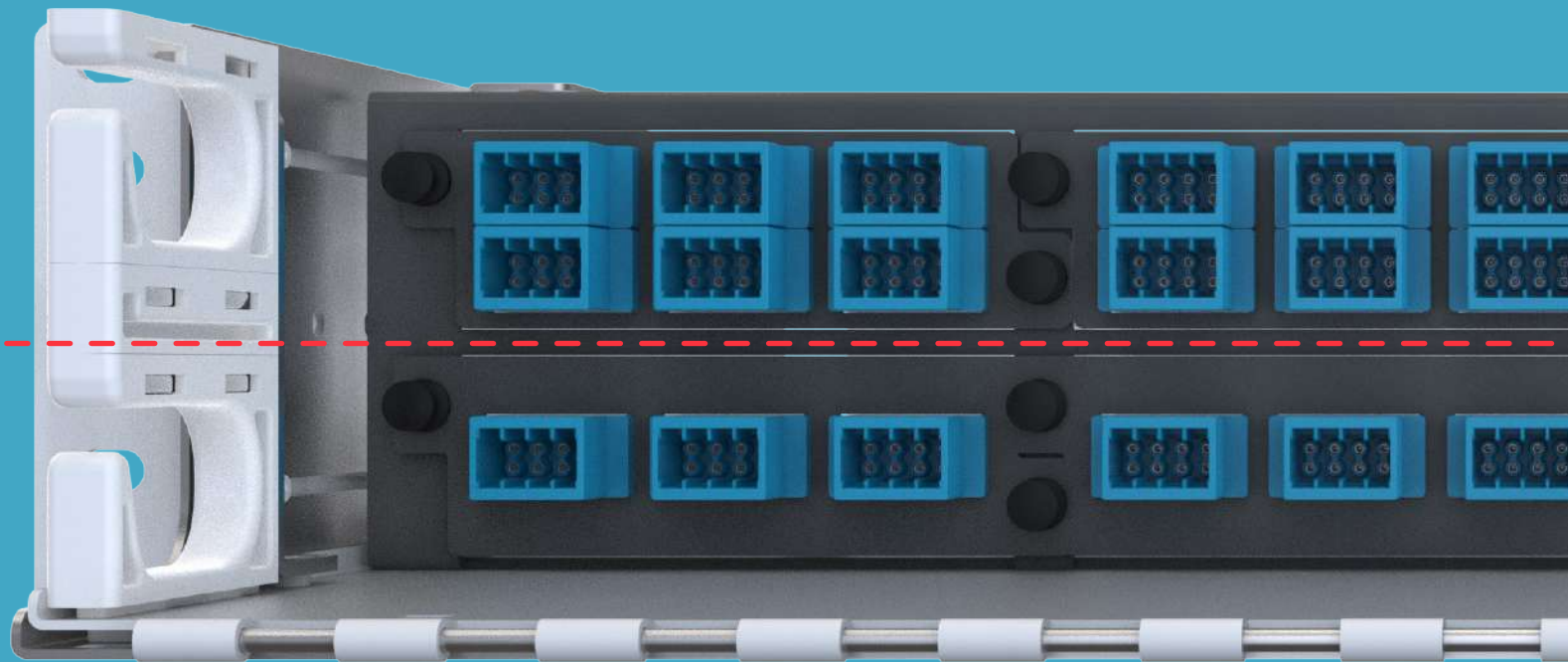


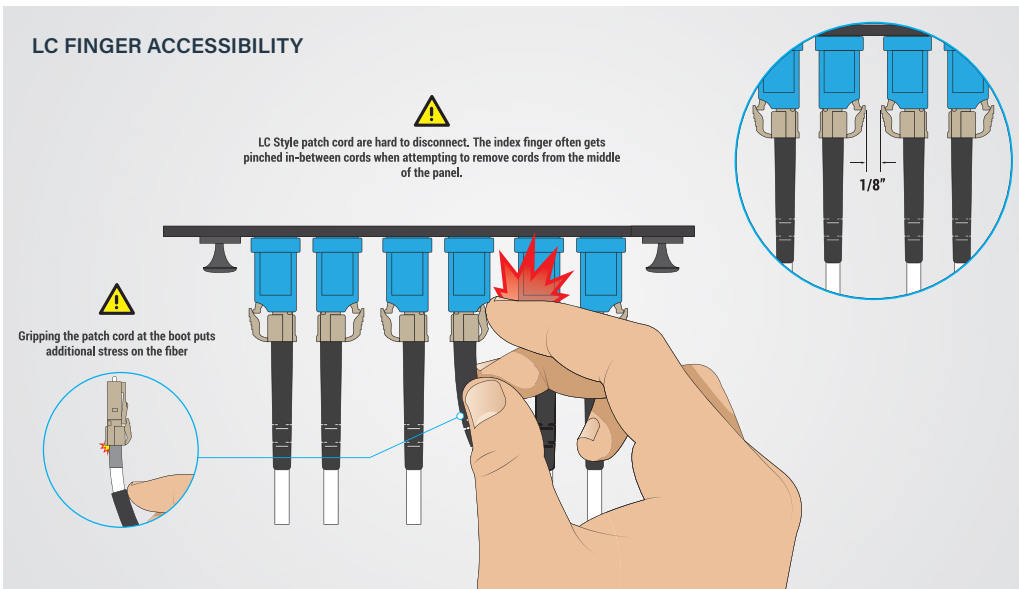
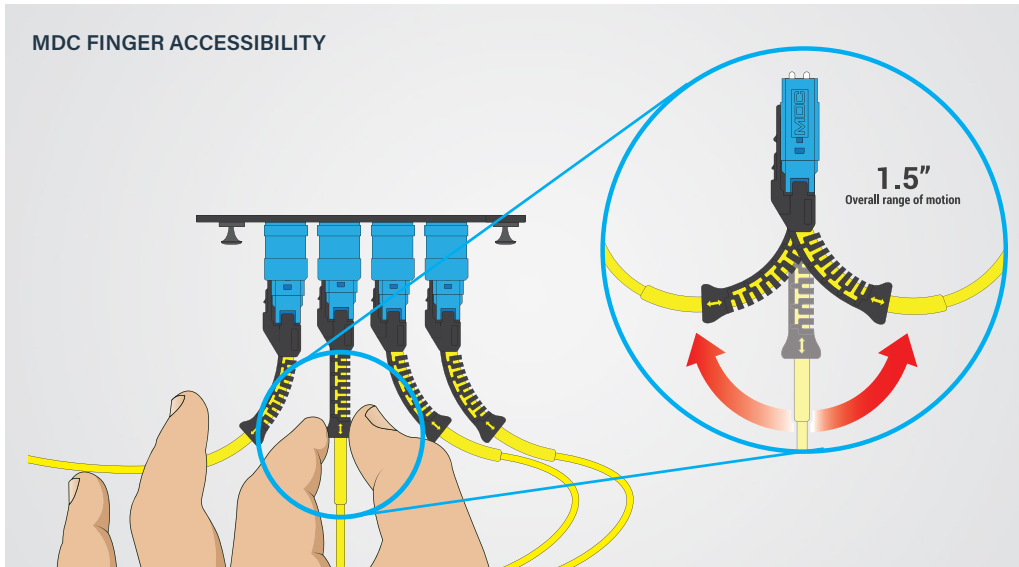
24x 2-Fiber MDC
Connectors (48F)

INFINIUM acclA/M – DENSITY

UHD+
Ultra-High Density Plus
192 Fibers/RU

HD
High Density
96 Fibers/RU





INFINIUM acclA/M – ERGONOMICS ADVANTAGE

- Easy grip and release connectors
- The acclA/M solution delivers more hand/finger clearance than LC Patching – acclA/M with MDC offers 1.5 in of space vs. 1/8 in of space with LC
- With LC connectors, technicians must reach almost an inch further into the cables to engage the latch vs. the acclA/M solution with MDC connectors
- Less force required for insertion and removal than current connectivity options

>40%

Faster Patch
Cable Install

>60%

Faster Patch
Cable Removal

TIME STUDIES



ERGONOMICS
TIME STUDY VIDEO



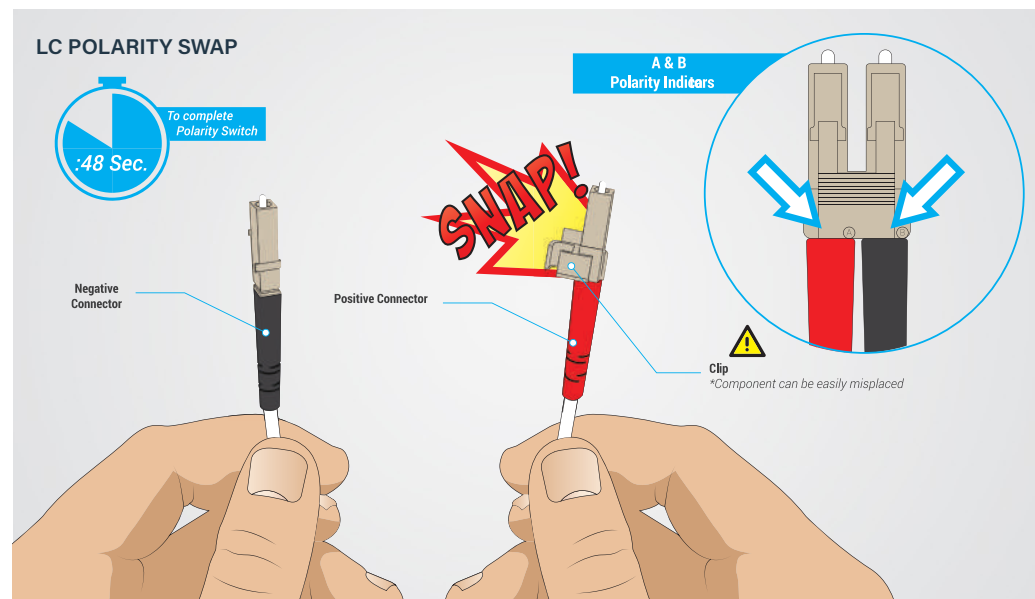
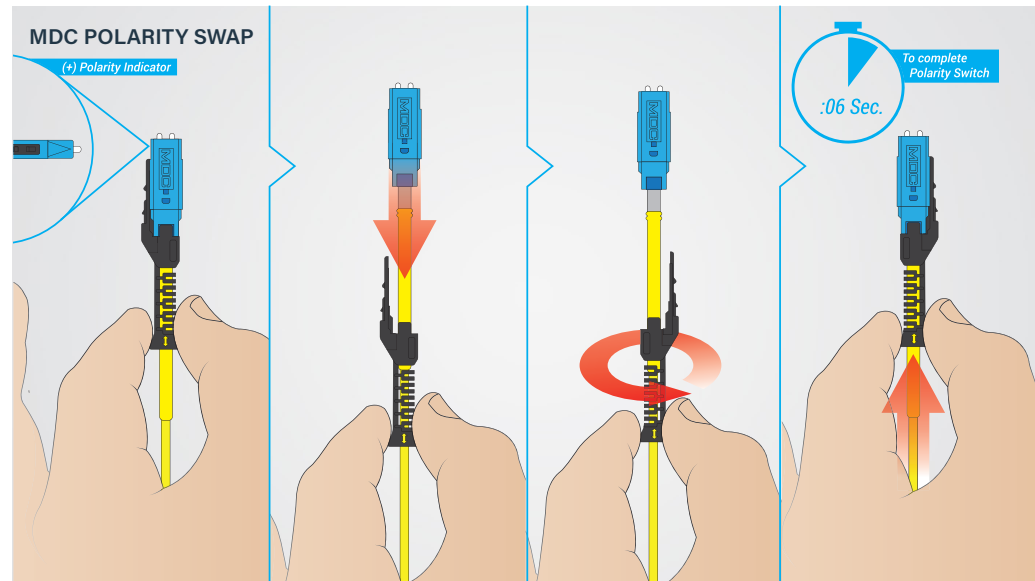
MID-PANEL
TIME STUDY VIDEO

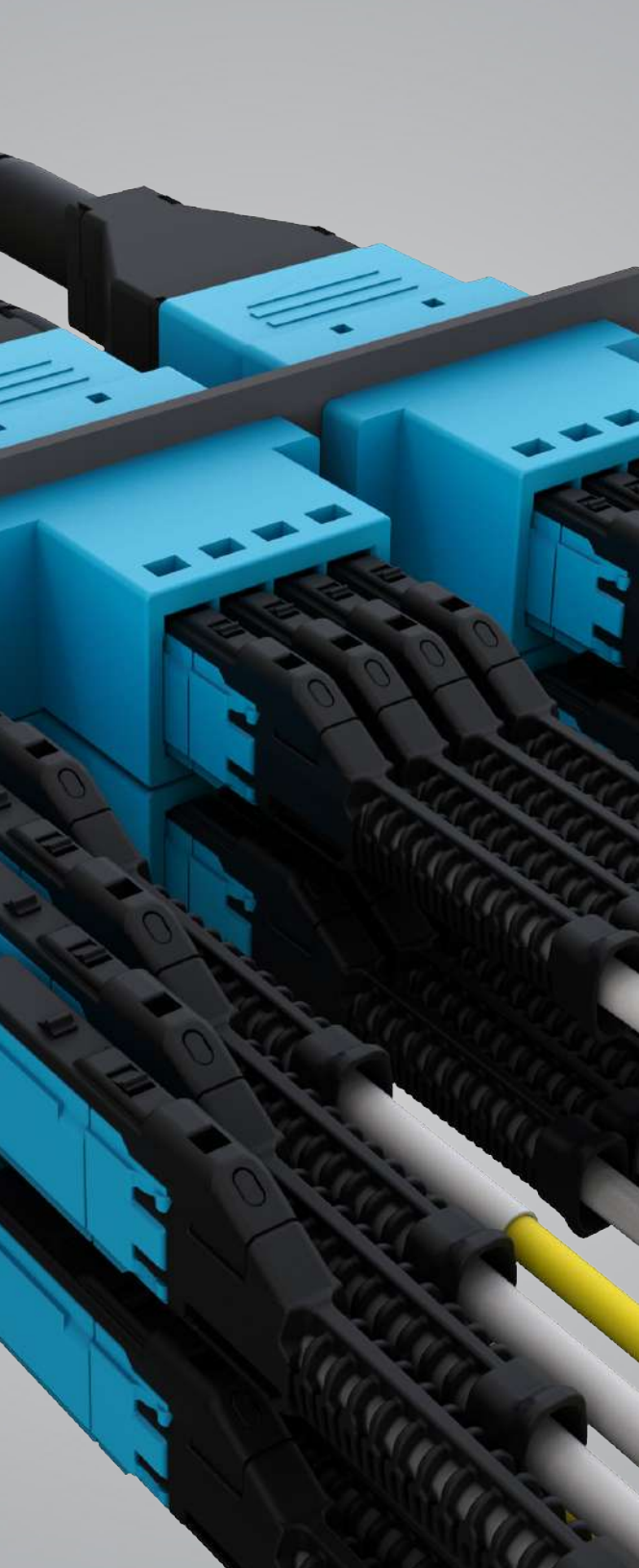
INFINIUM acclAIM – INSTALL, MAINTENANCE & TESTING ADVANTAGE

- Faster cable installs and removal
- acclAIM polarity is application-defined and can be adapted to nearly any link configuration; preplanned, on-site, or on the fly vs. cassettes which must be pre-planned or reordered to change polarity
- Patch cord polarity switching with acclAIM takes 6 seconds vs. LC Duplex which takes 48 with the potential of lost components – acclAIM solution with MDC patch cords saves 42 seconds on average vs. LC duplex and days faster than reordering a cassette to correct polarity
- No cassette to inspect before mating
- No front / rear connector troubleshooting – one connection point
- Adapters do not become obsolete if new grades of fiber are developed, can be reused indefinitely, and do not require delicate handling
- Testing is completed with a single link after mating vs. testing both sides of a cassette reducing significant time



MDC POLARITY TIME STUDY VIDEO



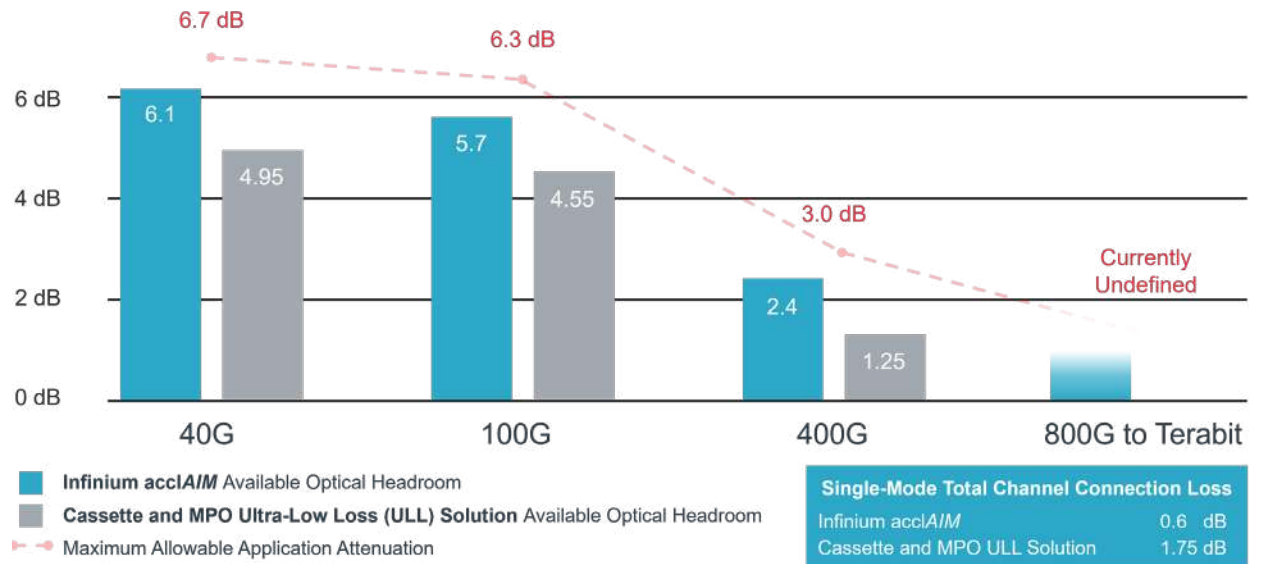


INFINIUM acclA/M – PERFORMANCE ADVANTAGE

Core Level Performance - Maximizing Optical Headroom

There is an inevitable correlation between maximizing optical performance margins (optical headroom) and optimizing overall costs from both an operational and procurement perspective – Infinium acclA/M delivers dramatically more optical headroom than any other pre-terminated solution!

Performance Advantage



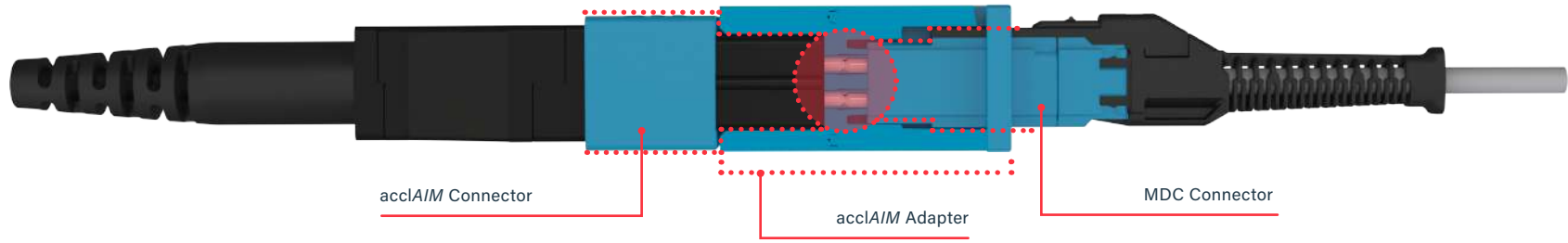
	Industry Standard Pre-Terminated Solution	Infinium acclA/M Core Solution Improvement
Bit Error Rate (errors over time)	2.35E-07	> 3.6 x
Total Link Loss (dB)	7.20 dB	> 1.0 dB
FEC Corrections (codewords)	5.93E+05	> 1.77 x

[Quantum-Effect-Paper - multiLane](#)

<https://multilaneinc.com/wp-content/uploads/2021/05/Quantum-Effect-Paper.pdf>

INFINIUM acclAIM – PERFORMANCE ADVANTAGE

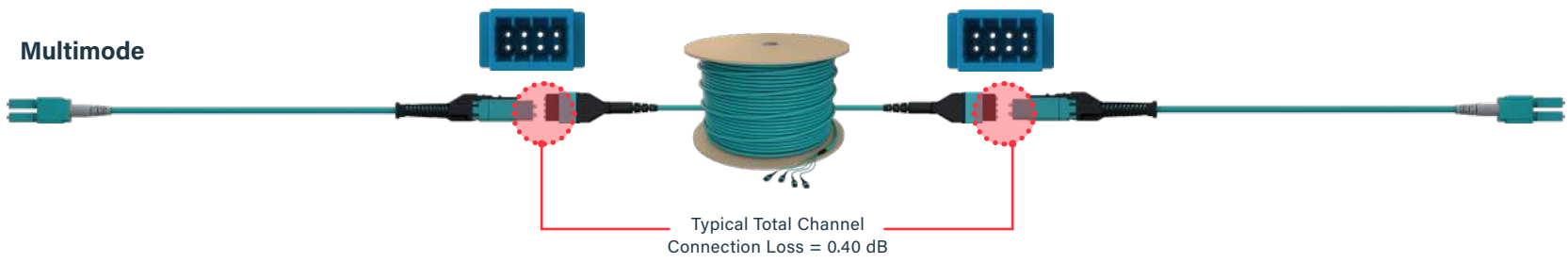
Core Level Performance



Single-Mode



Multimode



INFINIUM acclA/M SOLUTION – ORDERING INFORMATION

Infinium acclA/M Conversion Adapters

Item Number	Connector Style	Fiber Type	Fiber / Adapter Count	Color
HDFP-AME24LC	acclA/M / MDC (4)	OM4 (MM)	24 (3 - Adapters)	Aqua
HDFP-AME24QC	acclA/M / MDC (4)	OM5 (MM)	24 (3 - Adapters)	Lime
HDFP-AME24AC	acclA/M / MDC (4)	OS2 (SM)	24 (3 - Adapters)	Blue
HDFP-AME48LC	acclA/M / MDC (4)	OM4 (MM)	48 (6 - Adapters)	Aqua
HDFP-AME48QC	acclA/M / MDC (4)	OM5 (MM)	48 (6 - Adapters)	Lime
HDFP-AME48AC	acclA/M / MDC (4)	OS2 (SM)	48 (6 - Adapters)	Blue



HDFP-AME24LC



HDFP-AME48AC

Infinium acclA/M Pre-Configured Trunk Cable Assemblies

Item Number	Description	Fiber Type	Fiber Count	Polarity	Jacket Type	Length	UOM
CAMAMC37S5JMM0xxxM(F)	Infinium Core	OS2	8	C	Plenum	xxx	M / F
CAMAMC37S5EMM0xxxM(F)	Infinium Core	OM4	8	C	Plenum	xxx	M / F
CAMAMC37S5HMM0xxxM(F)	Infinium Core	OM5	8	C	Plenum	xxx	M / F
CAMAMC63SAJMM0xxxM(F)	Infinium Core	OS2	24	C	Plenum	xxx	M / F
CAMAMC63SAEMM0xxxM(F)	Infinium Core	OM4	24	C	Plenum	xxx	M / F
CAMAMC63SAHMM0xxxM(F)	Infinium Core	OM5	24	C	Plenum	xxx	M / F
CAMAMC63SEJMM0xxxM(F)	Infinium Core	OS2	48	C	Plenum	xxx	M / F
CAMAMC63SEEMM0xxxM(F)	Infinium Core	OM4	48	C	Plenum	xxx	M / F
CAMAMC63SEHMM0xxxM(F)	Infinium Core	OM5	48	C	Plenum	xxx	M / F



CAMAMC63SAEMM1xxxM(F)



CAMAMC63SEJMM1xxxM(F)



INFINIUM acclA/M
PAGE

INFINIUM acclA/M SOLUTION – ORDERING INFORMATION

Infinium acclA/M Pre-Configured MDC Patch Cords

MDC Patch Cords	Performance	Fiber Type	Connector A	Connector B	Polarity	Jacket Type	Length	UOM
L1-802JA2EAB0xxxM(F)	Infinium Core	OM4	LC Uniboot	MDC	Method A	Plenum	xxx	M / F
L1-802JA2HAB0xxxM(F)	Infinium Core	OM5	LC Uniboot	MDC	Method A	Plenum	xxx	M / F
L1-802JA2JYB0xxxM(F)	Infinium Core	OS2	LC Uniboot	MDC	Method A	Plenum	xxx	M / F
L1-2J2JA2EAB0xxxM(F)	Infinium Core	OM4	MDC	MDC	Method A	Plenum	xxx	M / F
L1-2J2JA2HAB0xxxM(F)	Infinium Core	OM5	MDC	MDC	Method A	Plenum	xxx	M / F
L1-2J2JA2JYB0xxxM(F)	Infinium Core	OS2	MDC	MDC	Method A	Plenum	xxx	M / F
L3-802JA2EAB0xxxM(F)	Infinium Ultra	OM4	LC Uniboot	MDC	Method A	Plenum	xxx	M / F
L3-802JA2HAB0xxxM(F)	Infinium Ultra	OM5	LC Uniboot	MDC	Method A	Plenum	xxx	M / F
L3-802JA2JYB0xxxM(F)	Infinium Ultra	OS2	LC Uniboot	MDC	Method A	Plenum	xxx	M / F
L3-2J2JA2EAB0xxxM(F)	Infinium Ultra	OM4	MDC	MDC	Method A	Plenum	xxx	M / F
L3-2J2JA2HAB0xxxM(F)	Infinium Ultra	OM5	MDC	MDC	Method A	Plenum	xxx	M / F
L3-2J2JA2JYB0xxxM(F)	Infinium Ultra	OS2	MDC	MDC	Method A	Plenum	xxx	M / F

NOTE: For length, replace XXX with three digit length measure (example 003 = 3, 010 = 10, or 100 = 100)
For Unit of Measure (UOM), select (M) for Meters, or (F) for Feet

Infinium HD-E Enclosure - M4 Drawer Face

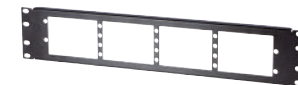
Item Number	Description
INFC01U-M4-E	Infinium HD-E Rack Mount Enclosure 1U, M4 Drawer Face
INFC02U-M4-E	Infinium HD-E Rack Mount Enclosure 2U, M4 Drawer Face
INFC04U-M4-E	Infinium HD-E Rack Mount Enclosure 4U, M4 Drawer Face



INFC02U-M4-E

High-Density Flush Mounting Fiber Patch Panel

Item Number	Description
RFPHD01U	High-Density Flush Mounting Fiber Patch Panel, 1U
RFPHD02U	High-Density Flush Mounting Fiber Patch Panel, 2U



RFPHD02U



Data, Power & Control

60 Woodlawn Street
West Hartford, CT 06110
800.934.5432
www.legrand.us

FOLLOW US

